

NH fuse switch-disconnector size 00, 160 A, panel mounting (33 199)



Description

Article

Part No.: 33 199

QUADRON® Panel

NH fuse switch-disconnector size 00, 160 A, panel mounting
connection cleat

System

Mounting plate

Product group 09

Subgroup 03

pack size 1

EAN 4021267331993

Advantages of the product

For safe connection of the leads, the shock protection is split into 2. Self-closing inspection holes are available in the cover.

Catalog page 2015 : 6/19

eCl@ss 6.1 27142108
eCl@ss 7.1 27142108
ETIM 4.0 EC001040
ETIM 5.0 EC001040

Approvals

Standards

IEC 60947-1:2007 + A1:2010 + A2:2014
IEC 60947-3:2008 + A1:2012

Approvals

IEC (CB), Germanischer Lloyd, CCC



Type number: LTS-00

CCC certificate: 2004010302117250

Product data

Electrical data

Rated current (IEC): 160 A
Rated voltage (IEC) AC: 690 V
Rated voltage (IEC) DC: 440 V

Utilisation category AC-23B (400V)
AC (IEC 60947-3) : AC-23B (500V/125A)
AC-22B (690V)
AC-21B (690V)
AC-20B (1000V) at pollution degree 2

visible information required if used at more than 690V AC: do not switch under load

Utilisation category DC specifications: 2 current paths (L1,L3) in series
DC (IEC 60947-3) : DC-22B (220V)
DC-22B (440V/125A)
DC-21B (440V)
DC-20B (1000V) at pollution degree 2

visible information required if used at more than 440V DC: do not switch under load

Power dissipation:

The power dissipation at a typical load of 80% of the rated current results to 4.5 W.
(The power dissipation for operation with rated current would be 7 W.)

rated isolation voltage U_i (AC): 800 V
Rated surge voltage U_{imp} : 6 kV
max. permitted voltage (IEC) AC: 800 V
max. permitted voltage (IEC) DC: 800 V

cond. rated short-circuit current with fuses: 50 kA / 690V
approved with fuse links of characteristics: gG

for fuse links IEC 60269-2-1 (I) / DIN VDE 0636-201 size 00 up to 12W power dissipation

Entsprechend den angegebenen AC- und DC- Schalteigenschaften und unter Berücksichtigung der Überlastbedingungen, sind gewisse Abstände zu geerdeten Metallteilen einzuhalten. Nähere Informationen auf Anfrage.

Bei Verwendung als Trennschalter ist die Einhaltung der Abstände nicht erforderlich.

Degree of protection IP30 at front, degree of protection near terminal depends on installation

Mechanical data

W x H x D: 106 x 176 x 83

Weight: 78 kg/100

Poles: 3-pole

front degree of protection: IP30

Terminal points

clamp-type terminals :

1,5 - 70 mm²

flexible cables with wire-end ferrule,

stranded round cables,

la. Cu max. 12 mm wide, max. 10 mm thick

Md 3 Nm

(flexible cables of maximum cross-section may not fit when using wire-end ferrule)

Accessories: Screw connector: M8 / 70mm²; 12 - 14Nm torque, wedge clamp terminal: Cu, Al*
16-70mm² s(r), s(s), f+AE; 3Nm torque tunnel terminal 3x Cu 1.5-16mm² s(r), f+AE; 3Nm torque

*Connections not maintenance-free if aluminium conductors are used.

Material properties

Main body: temperature stability 125°C,
self-extinguishing in acc. to UL 94,
creepage resistance CTI 200,
halogen-free

Shock protection cover: temperature stability 125°C,
self-extinguishing in acc. to UL 94,
creepage resistance CTI 200

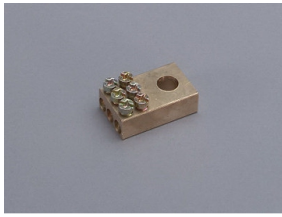
Handle: temperature stability 125°C,
self-extinguishing in acc. to UL 94,
creepage resistance CTI 200

Contacts: spring-loaded copper contacts, silver plated

Version

Variant with fuse monitoring: 33 207

Accessories



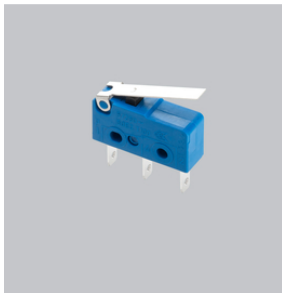
01 182
tunnel terminal
1 x 2,5 - 16mm² + 2 x 2,5 - 25mm²
size 00



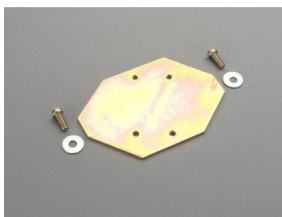
03 849
lid interlock
for sealing wire
Size 00



30 894
M8 screw connector
with spring washer
size 00



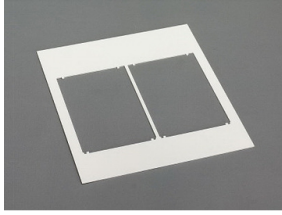
33 156
pilot switch for lid position
pilot switch: 250V AC / 5A; 30V DC / 4A
Size 000, 00, 2, 3



33 193
rapid mounting set
busbar distance 125 mm or 150 mm
size 00



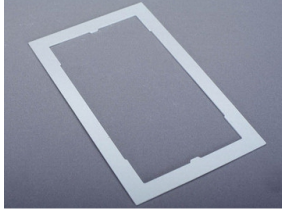
33 224
Wedge clamp terminal for switch disconnecter
for 16-70 mm², Cu and Al
size 00

**78 105**

Trim frame, double

232 x 210, not for 33221, 33222

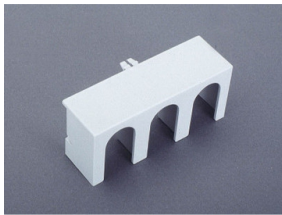
size 00

**78 893**

Trim frame, single

130 x 210, not for 33221, 33222

size 00

**79 811**

cover for connecting space

for 33 200, 33 208, 33 329, 33 394, 33 398, 33 420

size 00